



# Certificate of Analysis

UElandy Inc.

Room 302, Building 1, No.18& Chunyao Road,

Xiangcheng District, Suzhou,

Jiangsu Province P.R, 215143 China

www.uelandy.com

Refer to website for regional contact information.

Product Name:	UE Multisource Genomic DNA Minprep Kit	Lot ID:	220616KC1
Catalog Number:	UE-MN-MS-GDNA-50	Expiration Date:	06/15/2025

## Quality Control

### Spectrophotometric Analysis

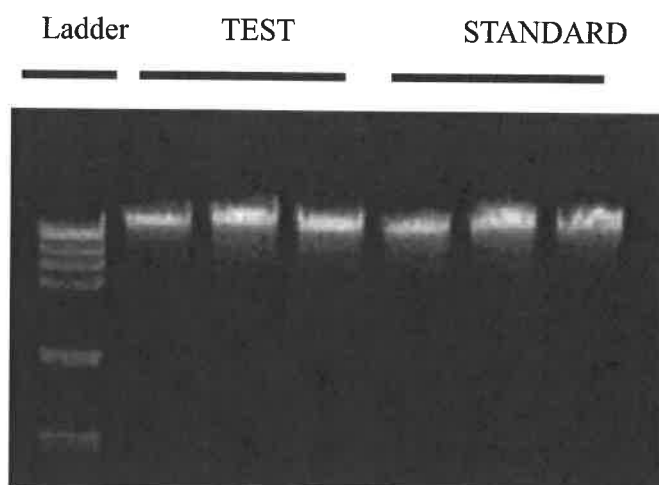
- Acceptable Range for  $A_{260}/A_{280}=1.8\pm0.15$ .
- Comparison of the Test Sample to a previously tested Standard. Acceptable range for Test Sample is  $\leq \pm 10\%$  of Standard, based upon spectrophotometric analysis. The "Standard" is a previously tested and validated sample.

### Electrophoretic Analysis

- Agarose gel electrophoresis of the samples exhibits a tight genomic DNA band without significant visible degradation.
- Agarose gel electrophoresis of the samples exhibits no contaminating RNA.

### Gel Image and Test Data

Item	Test Date						Sample
	1	2	3	4	5	6	
$A_{260}$	0.201	0.260	0.262	0.182	0.246	0.230	1,2,3 are duplicate Test Samples 4,5,6 are duplicate Standards
$A_{280}$	0.108	0.143	0.146	0.094	0.135	0.124	
$A_{260}/A_{280}$	1.868	1.817	1.797	1.946	1.828	1.852	
Yield ( $\mu\text{g}$ )	5.032	6.491	6.538	4.550	6.154	5.750	
Electrophoresis	√	√	√	√	√	√	PASS
No visible RNA	√	√	√	√	√	√	
Endonuclease digest	√	√	√	√	√	√	
[Test Sample/Standard] Yield Difference	9.8%						PASS



UElany Inc. warrants and represents that all inspections and testing for the article described above have been performed at UElany Inc. QC laboratory located on-site at the manufacturing plant. UElany Inc. manufacturing facility is located at Room 302, Building 1, No.18& Chunyao Road, Xiangcheng District, Suzhou, Jiangsu Province P.R, 215143 China

(QC Inspector) *Min Mei*

(Approver) *Bu Hua Yu 2022.06.17*